



G I G A B E A M

GigaBeam.com

● Gi-Max Indoor Controller



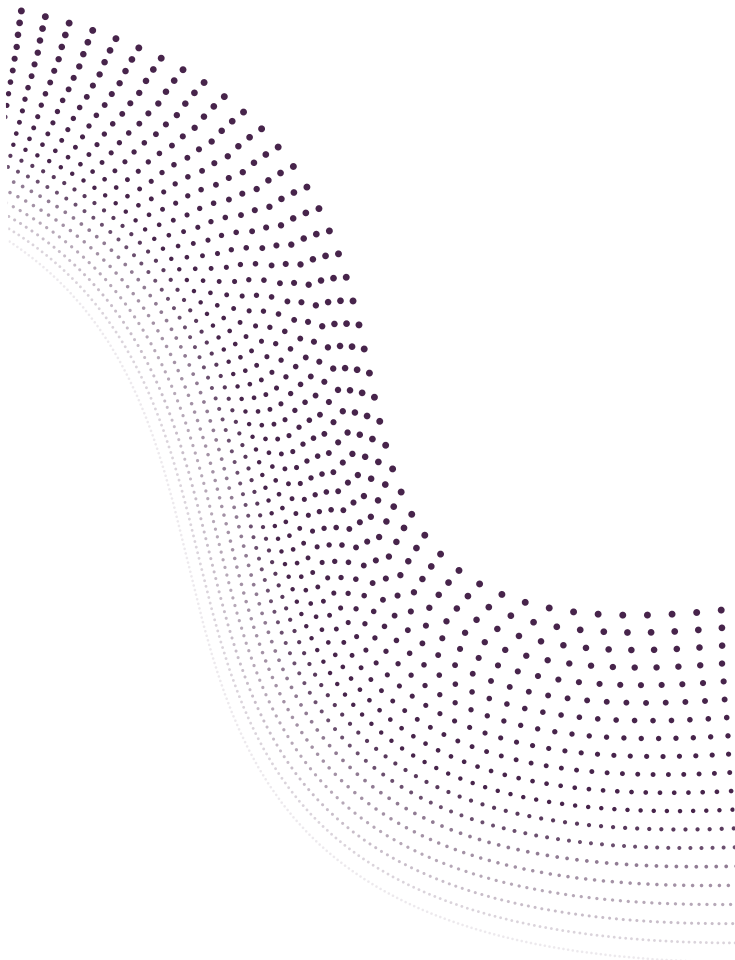
Product Description

This system provides an extremely low cost of entry, requiring only a single outdoor Base Station Unit (BSU) to begin service. As the number of subscribers grows, sectorization of the base site enables easy growth of your network. With the Gi-MAX Indoor Controller (IDC), additional sectors can be added to enhance performance, management and reliability while protecting your investment.

The Indoor Controller cards are housed within a compact 4U 19" rack mount chassis. Each card delivers a unique and independent function for the Base Site. These flexible cards can be added and arranged to suit your specific base station size and desired features.

Features

- Flexible Uplink Card
 - Aggregates data and power from the Base Station gateway site to the Outdoor Base Station Units .
 - Can support up to 4 BSU sectors; monitors BSU power, Ethernet connectivity, GPS status.
 - Can be interfaced to an external -48V rectifier or alternative source of -48V power.
 - Integrated management of the external rectifier is provided through a -48V status connection, supplying i/o for both 12C and open-collector based rectifier models .
 - Optimized pre-built cables, routed between the Uplink Card and BSU are available in lengths from 15 to 85M (50 to 270 ft)
- GPS Kit for Maximum Performance
 - Provides each BSU with a GPS based synchronization pulse.
 - Precise alignment of the intra- and inter-sector transmit and receive slots allows for spectral efficiency and frequency reuse is maximized.
 - Includes both a GPS card (supports up to 4 sectors) and an amplified outdoor GPS antenna and mounting kit.
- Advanced IDC Manager (on-board computer)
 - Fully self-contained management node.
 - Built upon an embedded Java/Linux Intel Pentium platform.
 - Provides management access to all of the Indoor Controller functions, including the configuration and status of each of the Indoor Controller cards. Access via Gi-MAX Manager GUI application, Gi-MAX application, or via Telnet/SSH CLI interface.





G I G A B E A M

GigaBeam Corporation
Commercial Park West
4915 Prospectus Drive, Suite H
Durham, NC 27713
Tel: 919-206-4426
Fax: 919-206-4420
sales@gigabeam.com

● Gi-Max Indoor Controller

- Failover Switch for Optimum Reliability
 - L2/L3 network device detects a BSU failure and re-routes network traffic to a pre-provisioned, hot-standby BSU.
- Easy, Pre-configured Solutions
 - Gi-MAX Indoor Controller components are available a la Carte and in pre-assembled, pre-tested configurations.

Specifications

- System
 - Dimensions (W x H x D) 440 x 177 x 340 mm (17.3" x 7" x 13.4")
 - Rack Height 4U
 - Temperature Range 0° - 45°C (operating);
-40° - 60°C (non-operating)
 - Humidity 0-95%, non-condensing
 - Vibration 1.0 Grms
- 4U 19" Rackmount Chassis
 - Weight (empty) 13 kg (28.6 lbs)
 - Input Power 100-240VAC, 50-60Hz
 - Chassis Power Supply* 350W + 350W redundant;
(*does not power outdoor BSU units)
 - Cooling (1) Chassis Fan, Hot-swap;
(2) Power Supply Fans, per PSU module
 - Regulatory RoHS, CE, FCC, UL
- Uplink Card
 - Rack Size 6U x 8HP
 - Weight 0.1 kg (0.2 lbs)
 - Connectors
 - Uplink to BSU DB15 (x4)
 - Network/Gateway Connection RJ45 (x4)
 - -48V External Rectifier Status DB9
 - -48V External Rectifier Power Amp/Tyco 1376009
 - Indicators
 - Connectivity Uplink Cable (x 4);
Ethernet Link (x 4);
GPS Sync (x4)
 - Status Chassis Power;
-48V Rectifier Power/Failure
- IDU Manager
 - Rack Size 6U x 4 HP
 - Weight 0.1 kg (0.2 lbs)



G I G A B E A M

GigaBeam Corporation
Commercial Park West
4915 Prospectus Drive, Suite H
Durham, NC 27713
Tel: 919-206-4426
Fax: 919-206-4420
sales@gigabeam.com

● Gi-Max Indoor Controller

- Connectors
 - Local Keyboard/Mouse USB x2
 - Monitor VGA
 - Local 10/100 Ethernet RJ45
- Indicators Power, Ethernet Link, Speed, Activity
- Controls Reset Button
- Operating System Linux
- Management Functions
- Status BSU Connectivity (Cable, Ethernet, GPS sync; Uplink Card; GPS card/antenna kit health; Failover Switch;-48V Rectifier Power/Status 4U Chassis
- Time of Day via GPS
- GPS Kit
 - Card
 - Size 6U x 4 HP
 - Weight 0.1 kg (0.2 lbs)
 - RF Input SMB
 - Indicators TX, RX, Sync pulse
 - Antenna/Pre-amp
 - Dimensions (H x Dia) 184 x 81mm (7.25" x 3.2")
 - Weight 0.34 kg (0.75 lbs)
 - Temperature -40° to +85°C
 - Humidity 0-95%
 - Regulatory CE, RoHS
 - Frequency 1575 MHz
 - Antenna Gain 3.5 dBi
 - Amplifier Gain 40 dB
 - RF output connector N-type
 - Impedance 50 ohms
 - Mast Mounting Kit Included
 - RF Cable Not Included